

CHAC Practicum Open House 2024

WELCOME!



www.chacmv.org/training

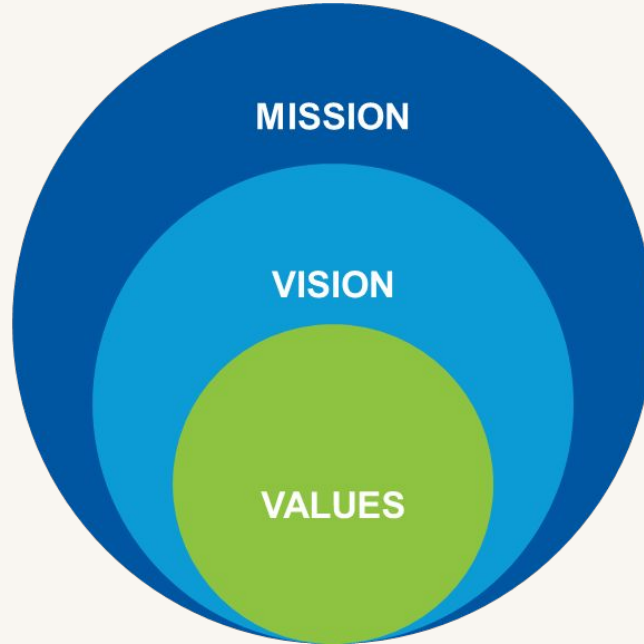


CHAC Mission, Vision & Values



Our Mission

To improve lives and strengthen communities through access to comprehensive and culturally responsive mental health services in Northern Santa Clara County.



Our Vision

Our community embraces mental health and wellness as integral to a healthy fulfilled life. Universal access to a continuum of mental health services that includes prevention and intervention. The result is an increasing healthy, resilient, and understanding community.

Responsive

Respectful

Commitment to
Excellence

Ethical

Inclusive



Our Guiding Principles



“Our services reflect what we believe in most - the value of each individual, the importance of family, and the necessity of community.”





Our Guiding Principles



Empathy

All who come to CHAC for assistance are treated with dignity, respect, and empathy.



Healthy Families

Our services focus on developing healthy families, including the growth and stability of each member.



Healthy Lifestyles

We promote healthy lifestyles through a comprehensive approach to mental health. Counseling, psychotherapy, and community awareness education are offered along with programs for the prevention and intervention of substance abuse.



Availability of Services

We are committed to offering programs and services to children, youth, and families without regard to their ability to pay.





Our Guiding Principles



Diversity



We value the diversity of the communities served and do not discriminate.



Collaboration

We believe that collaboration with other organizations is needed to meet the complex needs of our communities. We welcome innovative and creative ideas.



Professionalism

We expect a high degree of professionalism and integrity from staff, board members, and intern counselors. Open communication and willing cooperation are used in day-to-day operations and problem solving.



Future of CHAC

- Developing a long-term plan for sustainability
- Ensuring the continuation of services
- Navigating and responding to the changing landscape
- Merging with a partner who aligns with our values and goals

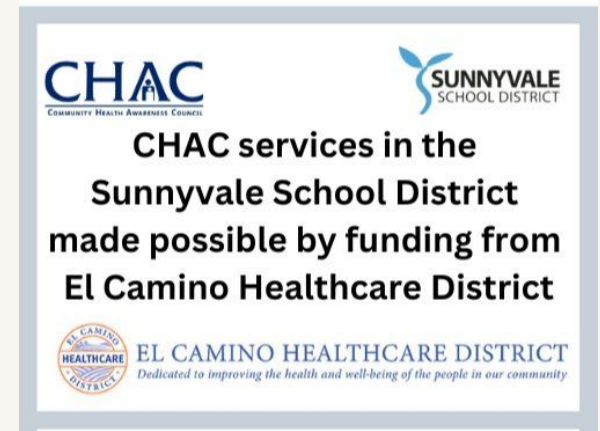


School Services



Core Beliefs:

- Leading with Accessibility, Responsiveness, and Collaboration;
- Meeting children where they are and highlighting the importance of the school community;
- Promoting and training for culturally sensitive support;
- Normalizing mental health as part of the school day;
- Establishing positive relationship connection with trusting adult.



Schools Served by CHAC



Almond Elementary
Covington Elementary
Gardner Bullis Elementary
Loyola Elementary
Oak Avenue Elementary
Santa Rita Elementary
Springer Elementary



Amy Imai Elementary
Bubb Elementary
Castro Elementary
Jose Vargas Elementary
Landels Elementary
Mistral Elementary
Monta Loma Elementary
Stevenson Elementary
Theuerkauf Elementary

Crittenden Middle School
Graham Middle School



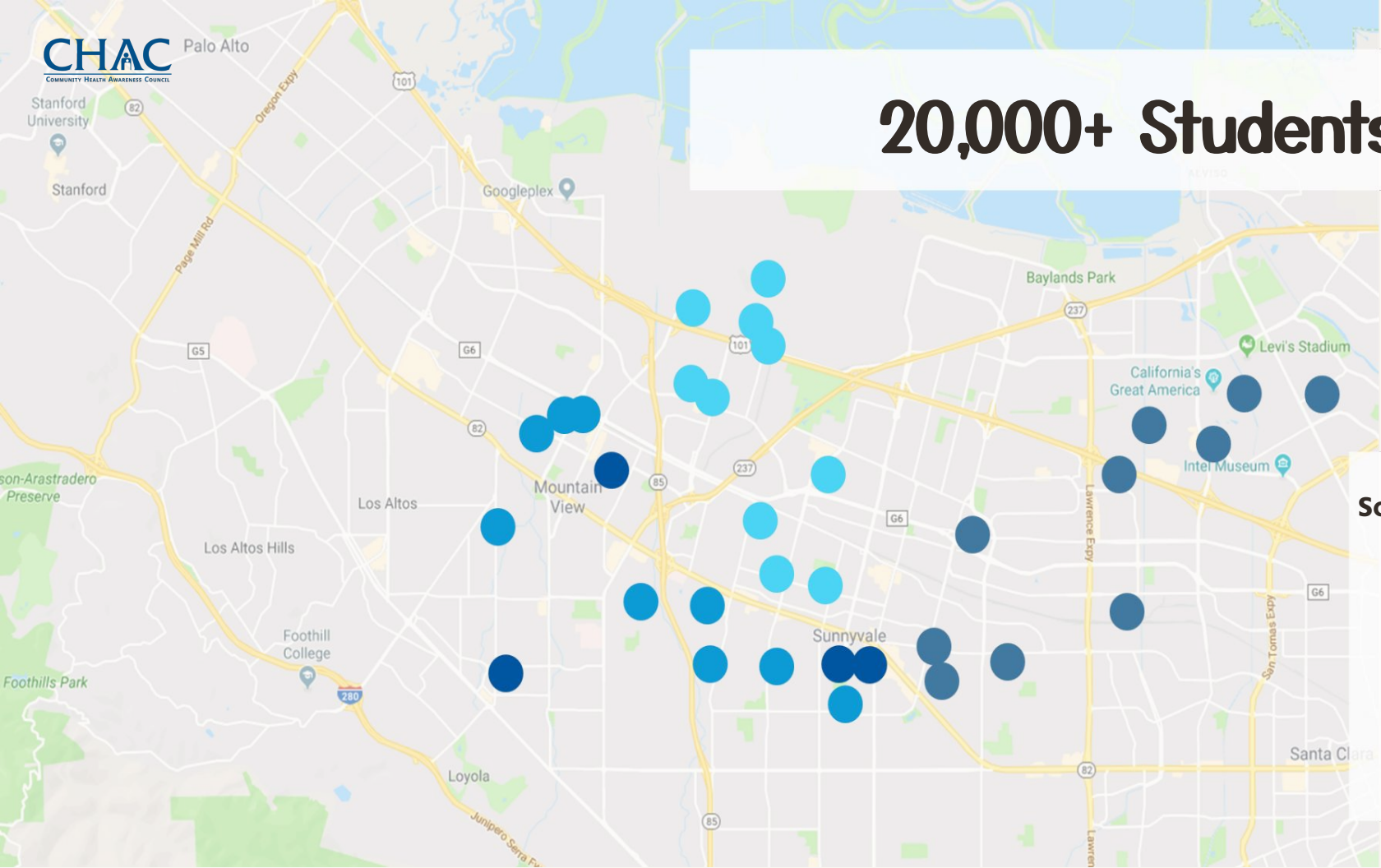
Bishop Elementary
Cherry Chase Elementary
Cumberland Elementary
Ellis Elementary
Fairwood Elementary
Lakewood Elementary
San Miguel Elementary
Vargas Elementary

Columbia Middle School
Sunnyvale Middle School



Mountain View High School
Los Altos High School
Alta Vista High School

20,000+ Students



Schools Serviced

MVLA
HIGH SCHOOL DISTRICT

SUNNYSVALE
SCHOOL DISTRICT

LASD

Mountain View Whisman
SCHOOL DISTRICT

ABC Model

ACCESS:

Increased availability of mental health services for all students

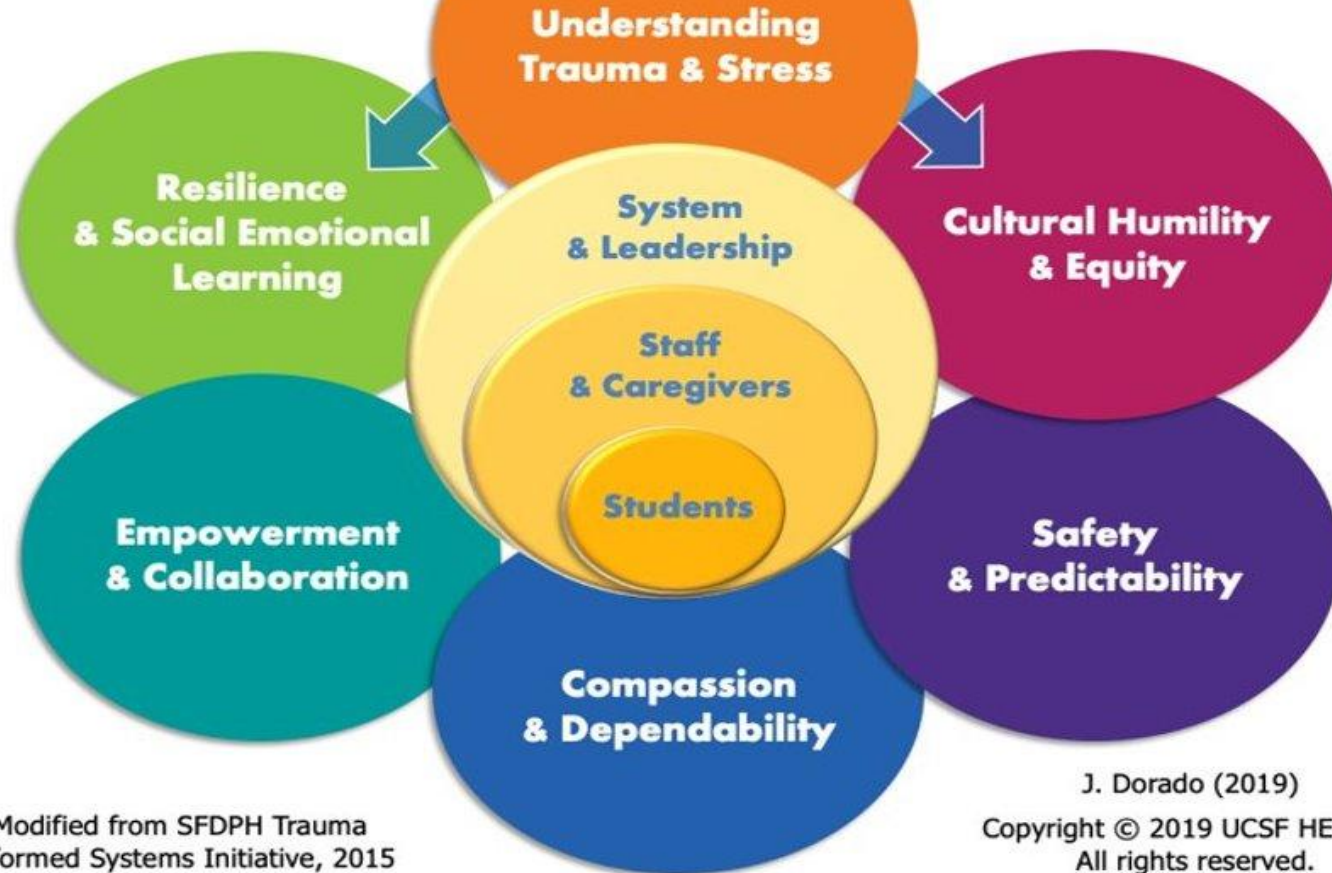
BRIDGING:

The connection between school, family, and community systems

COLLABORATION:

Integration with school team and guardians toward common goals

Trauma-Informed Principles for Promoting School and Community Success



Modified from SFDPH Trauma Informed Systems Initiative, 2015

J. Dorado (2019)
Copyright © 2019 UCSF HEARTS.
All rights reserved.



CHAC's Integrated Spectrum of Services in Schools

PREVENTION

TIER I: UNIVERSAL

Whole-classroom, CASEL-informed Social & Emotional Learning:

- MVWSD- TK-5th (all grades, all schools)
- SSD- 1st/2nd/3rd/5th (as requested)
- LASD- One-off, whole classroom lessons (as requested)
- Delivery of lessons variable with developmental level
 - Kimochi, CHAC|arts, SEL

INTERVENTION

TIER II: TARGETED

Individual Counseling:

- Within 14 days of referral
- Short-term: 12-24 sessions
- ERMHS year-long
- Parent/Teacher input
- Strengths and relational-based
- 1:1, dyads

Group Counseling:

- Psychoeducational
- Groups of 2-8, selected in collaboration with school & parents

The CHAC Training

Goals & Expectations for Cohort

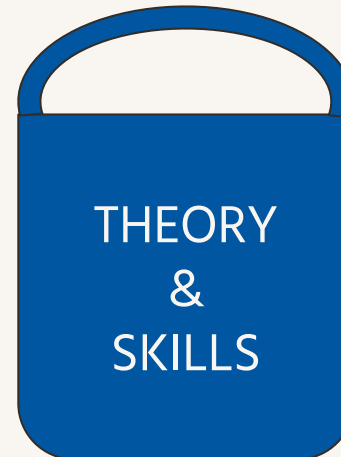


- ★ Increase Growth Mindset
- ★ Strengthen Knowledge of Client Care
- ★ Increase Collaborative Skills
- ★ Create Connections
- ★ Gain Confidence
- ★ Develop Professional Identity
- ★ Be an Active Participant
- ★ Lean in to the Unknown



Weekly Didactic

Three “buckets” of training:



[2023-24 Didactic Training Schedule](#)

CHAC Supervision

Individual

Weekly
In-person or remote
Full-time supervisor: 7-10
clinicians

Group

Separate Group Supervisor
Weekly, 2 hours
Remote and In-person
Up to 8 clinicians per group

Supervisor On Duty (SOD)

Supervisor available for extra support
8am - 6pm, Monday through Friday



Other Training Components:

- Week-long Orientation
 - [Clinical Training Guide](#)
 - [Professional Growth Milestones and Competencies](#)
- 